

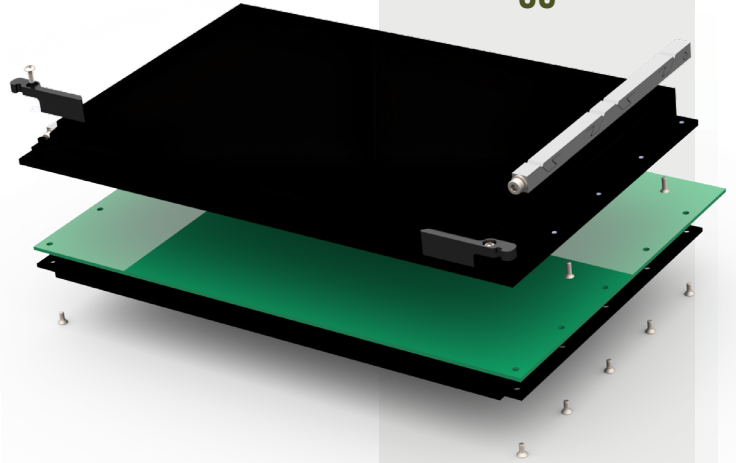


HEAT FRAME ASSEMBLY KIT DATA SHEET

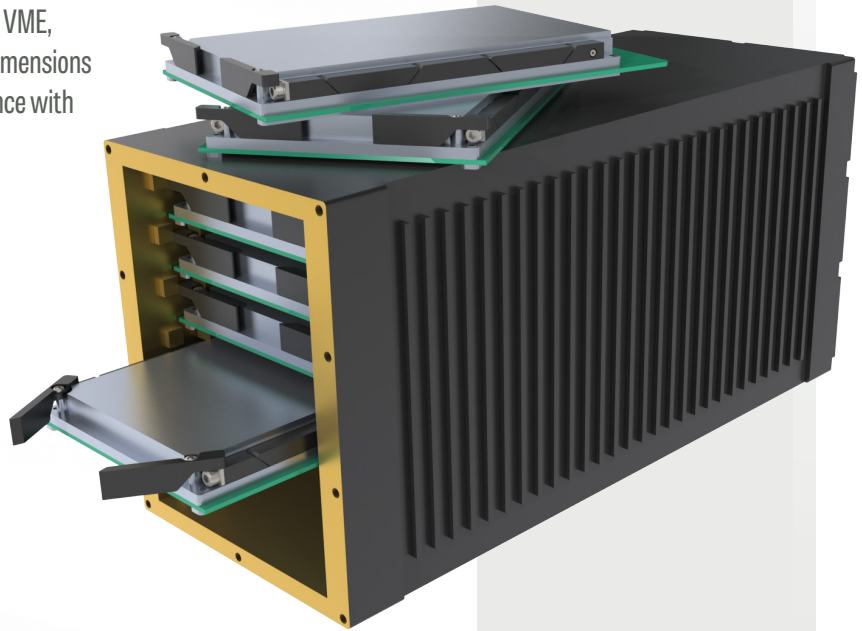
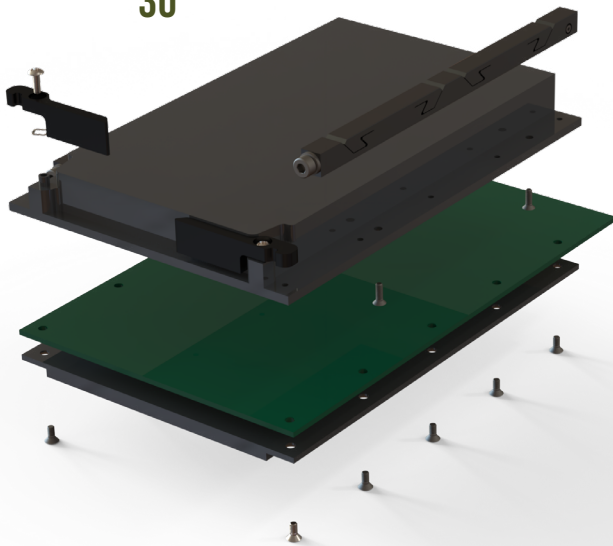
C/A Design's Conduction Cooled Heat Frame Assembly Kits are manufactured from solid aluminum and allow customers to machine to the precise topography or skyline of their electronic printed circuit board while being ruggedized

When integrated with wedgelocks and ejectors, this product allows VME, cPCI and other boards to fit within conduction cooled chassis slot dimensions with zero insertion force. Heat frames can be designed for compliance with many industry standards.

6U

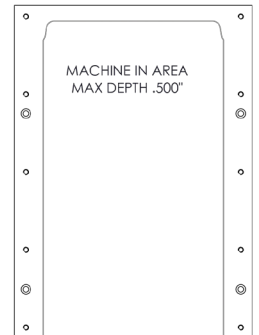
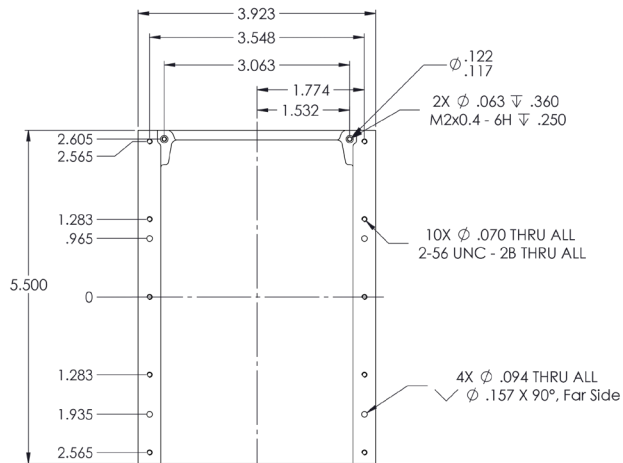
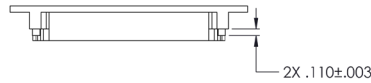
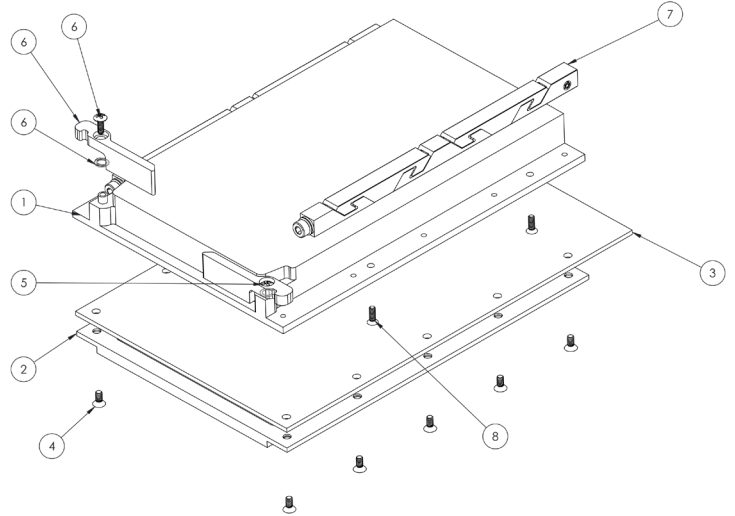
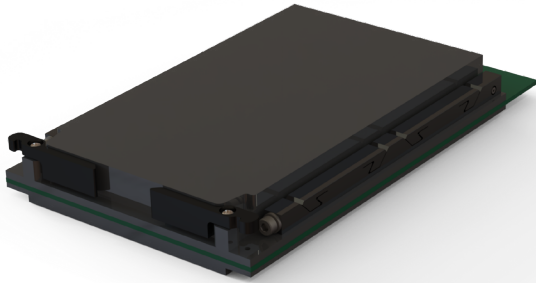


3U



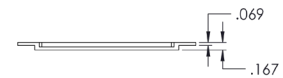
PART #	DESCRIPTION
VPX-482085-3U	3U VPX Heat Frame Blank Assembly Kit
VPX-482085-6U	6U VPX Heat Frame Blank Assembly Kit

VPX-482085-3U



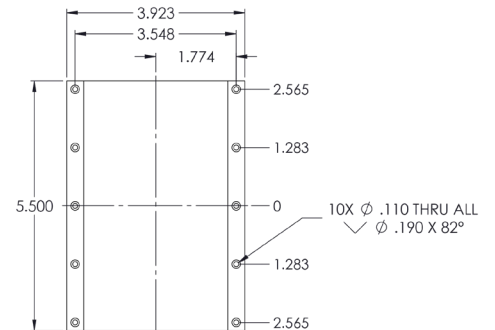
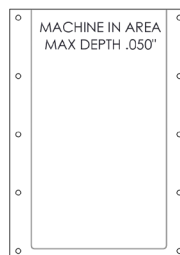
NOTES:

1. MATERIAL: ALUMINUM 6061-T6
2. FINISH: BLACK ANODIZE
3. PART NUMBER: 131196-01, PRIMARY COVER
4. UNLESS OTHERWISE SPECIFIED DIMENSIONS DEFINED BY MODEL
5. LASER ETCH MACHINE-IN OUTLINE AND NOTE ON BOTTOM OF FRAME

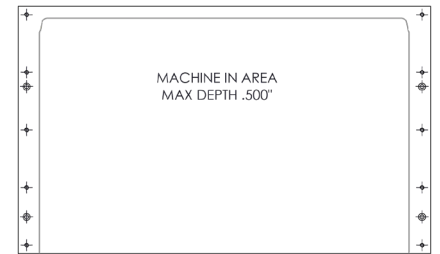
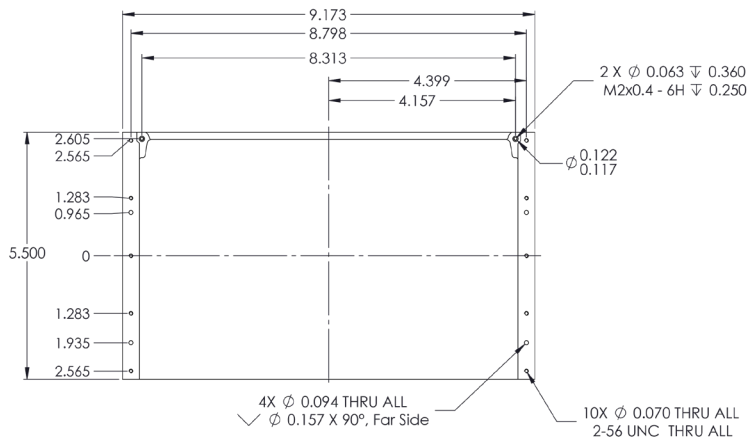
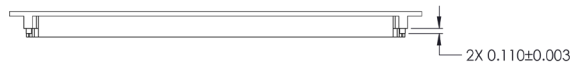
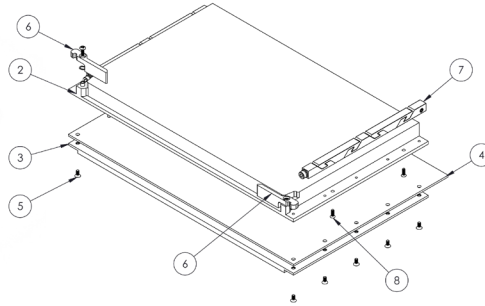
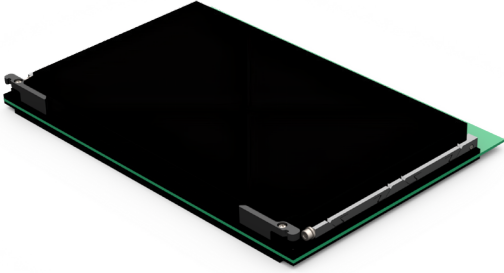


NOTES:

1. MATERIAL: ALUMINUM 6061-T6
2. FINISH: BLACK ANODIZE
3. PART NUMBER: 131196-02, SECONDARY COVER
4. UNLESS OTHERWISE SPECIFIED DIMENSIONS DEFINED BY MODEL
5. LASER ETCH MACHINE-IN OUTLINE AND NOTE ON BOTTOM OF FRAME



VPX-482085-6U



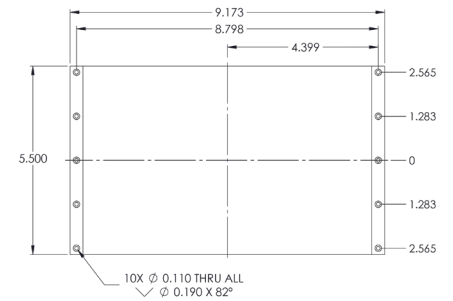
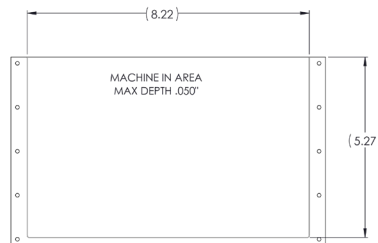
NOTES:

1. MATERIAL: ALUMINUM 6061-T6
2. FINISH: BLACK ANODIZE
3. PART NUMBER: 131239-01, PRIMARY COVER
4. UNLESS OTHERWISE SPECIFIED DIMENSIONS DEFINED BY MODEL
5. LASER ETCH MACHINE-IN OUTLINE AND NOTE ON BOTTOM SURFACE OF FRAME



NOTES:

1. MATERIAL: ALUMINUM 6061-T6
2. FINISH: BLACK ANODIZE
3. PART NUMBER: 131239-02, SECONDARY COVER
4. UNLESS OTHERWISE SPECIFIED DIMENSIONS DEFINED BY MODEL
5. LASER ETCH MACHINE-IN OUTLINE AND NOTE ON BOTTOM SURFACE OF FRAME





5 STEP THERMAL ENGINEERING GUIDE From Concept To Cooling

COOLVATION provides thermal management engineering services to improve products' thermal performance while applying cost effective solutions to eliminate unnecessary manufacturing costs. COOLVATION is a seamless resource extension for our customers' thermal & mechanical engineering teams from ideation to lab testing.

