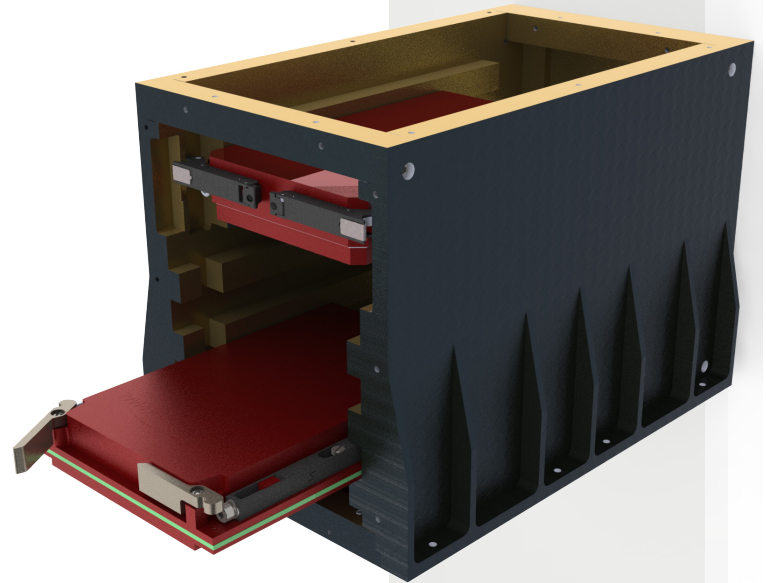




# CCC-3S-3U CONDUCTION COOLED CHASSIS DATA SHEET

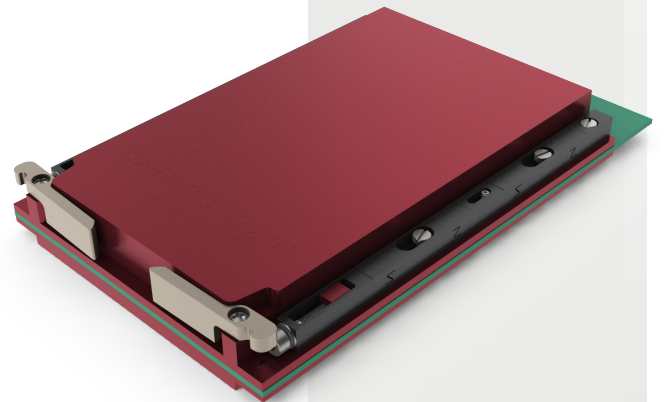


CA Design's VPX 3U Conduction Cooled Heat Frames are designed to meet VITA 48.2 standards and integrate seamlessly into conduction cooled chassis with zero insertion force.

Utilizing plug in boards, the conduction cooled heat frame transfers the heat from the components to the chassis flows through heatsinks in the chassis, to provide optimal cooling of the electronic devices. The chassis holds up to three 3U plug in boards and can accept a backplane and power supply for testing purposes.

## FEATURES

- Designed for use in VITA 48.2 applications
- Holds up to 3 VPX 3U cards
- Heatframe sold separately. See data sheet VPX-482085-3U





# 5 STEP THERMAL ENGINEERING GUIDE From Concept To Cooling

COOLVATION provides thermal management engineering services to improve products' thermal performance while applying cost effective solutions to eliminate unnecessary manufacturing costs. COOLVATION is a seamless resource extension for our customers' thermal & mechanical engineering teams from ideation to lab testing.

